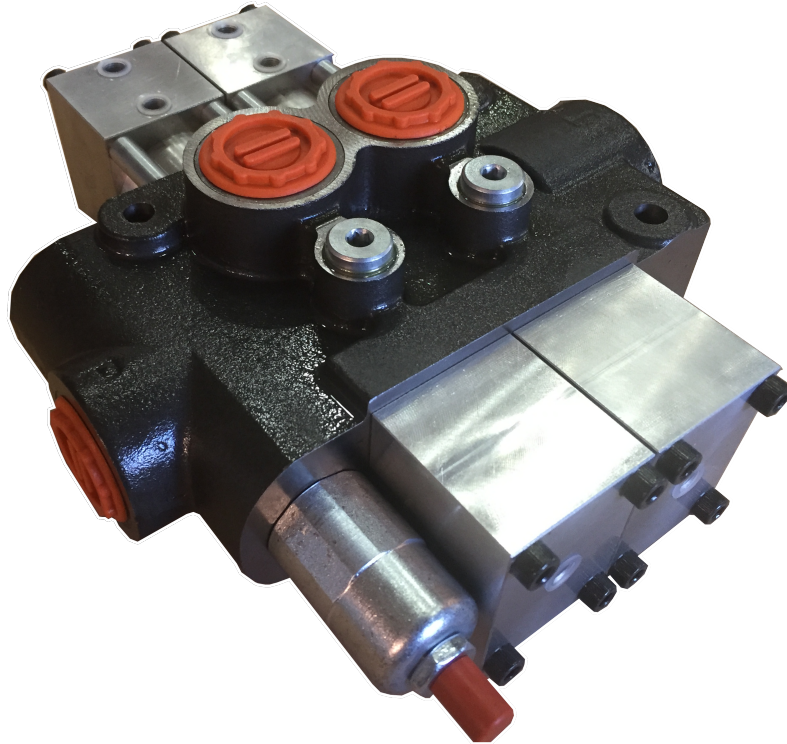


NEW CONTROL VALVE for tipping trucks & trailers - 02TV100



Features:

- Up to 120 l/min [32 gpm] flow rate
- Max. pressure of 220 bar [3190 psi]
- Fully proportional control
- Adjustable slow lower
- Pressure switch gauges

Pneumatic working pressure:
5 - 10 bar [73 to 145 psi]

Hydraulic scheme

